

Features and benefits:

- Proprietary 2.4GHz wireless
- Error free data transmission
- Environmentally sealed
- Internal antennae
- Remote on/off
- Industry leading wireless range
- Unrivalled resolution
- Unmatched battery life
- Low headroom
- Lightweight
- Each WLS is supplied with a load-centring bobbin

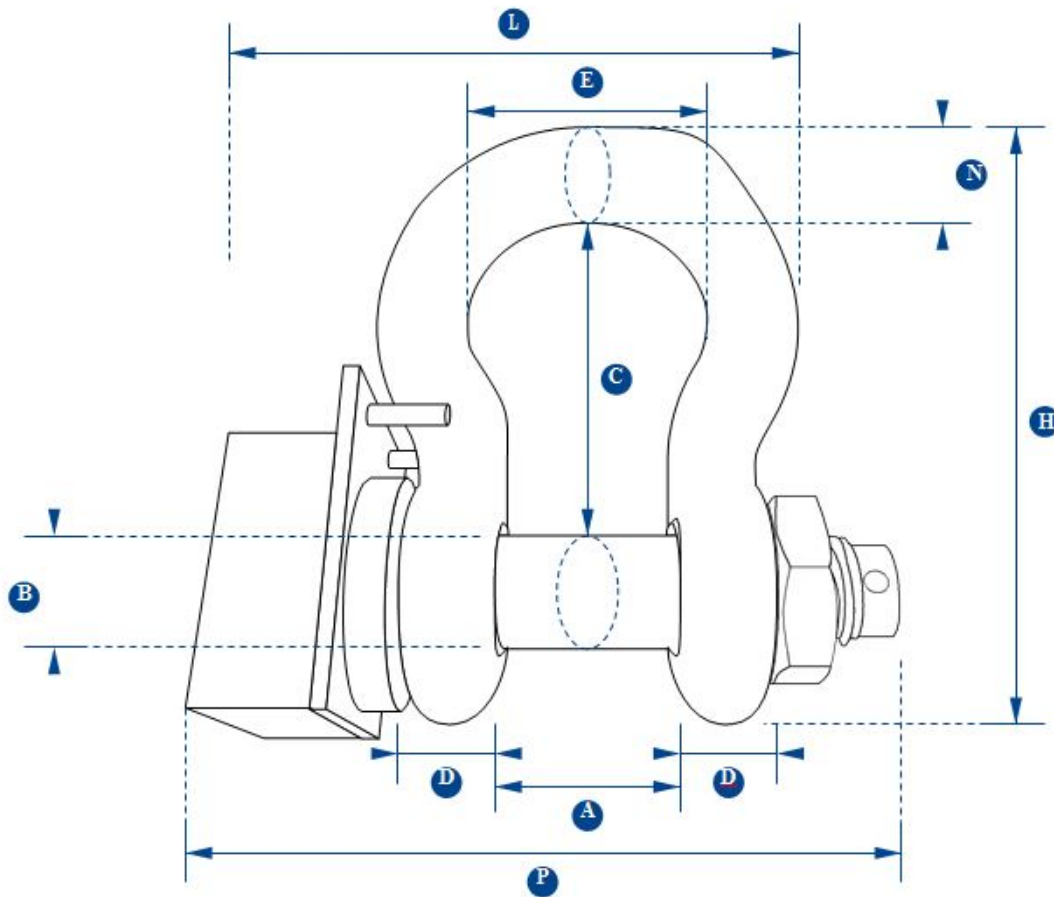
The latest addition to the arsenal of tension and load monitoring products is the Wireless Loadshackle.

Offering lighter overall weight and reduced headroom for tight applications, all our Wireless Loadshackles are manufactured from industry leading Crosby high carbon steel shackles. The shackles are then equipped with our advanced microprocessor controlled wireless electronics, giving them unrivalled resolution and accuracy.

The Wireless System provides high integrity, error free transmission of data via the latest in IEEE 802.15.4 (2.4 Ghz) technology. The System utilises a proprietary transport protocol as well as Direct Sequence Spread Spectrum (DSSS) and Quadrature Phase Shift Keying (QPSK) modulation. The Wireless System is unmatched in performance, capable of providing a license free transmission range of up to 250 metres.

The Wireless Loadshackle electronics are housed in a rugged enclosure, environmentally sealed to IP65 standards.

Each Wireless Loadshackle is supplied with a load-centring bobbin and can be used with our SW-C handheld (pictured) or our range of software and wireless accessories.



Specifications (mm)	Capacity	3.25te	6.5te	12te	25te	55te	85te	120te	200te	300te	400te
	Resolution	0.005te	0.005te	0.01te	0.02te	0.05te	0.05te	0.1te	0.2te	0.5te	0.5te
	Units	tonne									
	Weight	2.8kg	3.2kg	8kg	18kg	25kg	45kg	85kg	215kg	364kg	520kg
	Safety Factor	300% of rated load									
	Battery Type	Handheld – 2 x AA Alkaline / Loadcell 2 x AA Alkaline									
	Battery Life	Handheld 400hrs / Loadcell 400hrs continuous									
	Display Type	7 digit 8.8mm LCD									
	Op Temp	-10 - +50c									
	Accuracy	±1% of applied load									
	Frequency	2.4GHz									
	System Range	250 metres									
	Data Rate	3 updates per second									
	Protection	IP65									
	Dimension A	26.9	36.6	51.5	73	82.5	105	127	184	213	210
	Dimension B	19.1	25.4	35.1	51	57	70	82.5	121	152	178
	Dimension C	60.5	84	119	178	197	267	330	397	495	572
Dimension D	16	22.4	31.8	44.5	51	66.5	76	95.5	121	165	
Dimension E	42.9	58	82.5	127	164	184	200	279	330	330	
Dimension F	38.1	53	76	106	122	145	165	267	305	356	
Dimension H	106	148	210	313	348	453	546	743	895	1022	
Dimension L	116	142	180	265	290	352	392	562	664	689	
Dimension N	17.5	24.6	35.1	57	61	79	92	152	172	184	
Dimension P	132	164	202	277	301	378	425	521	618	710	