



At the core of the product line for over a decade, the cabled load shackle has surely help shape the modern load monitoring industry.

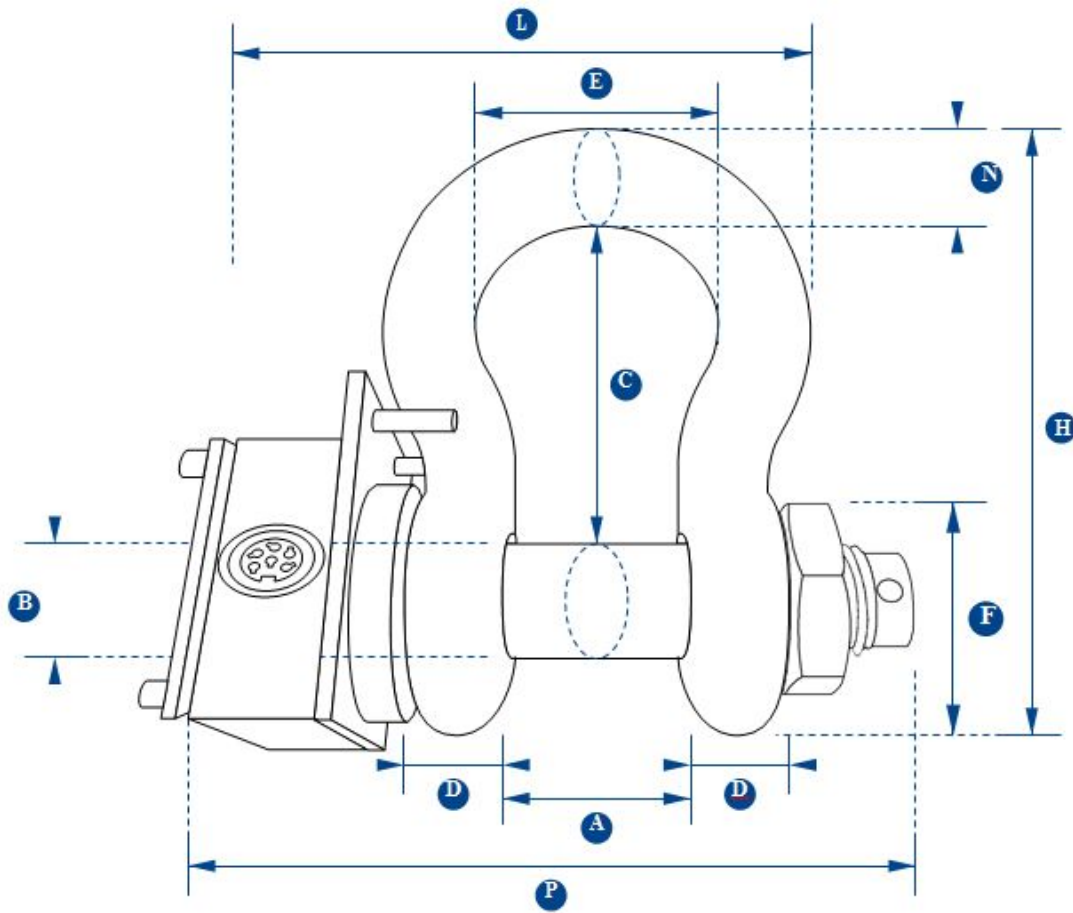
Manufactured from industry leading Crosby high carbon steel shackles, the product offers reduced overall weight and headroom providing a great fit for low headroom applications.

Utilising the same advanced microprocessor based electronics as all our products, our cables load shackle benefits from high sampling rates, extreme resistance to industrial level noise and unprecedented stability. This high stability provides the product with over 5000 divisions and the highest standard resolution of any high capacity Load Shackle on the market today. The cabled Load Shackles are environmentally sealed to IP67 and as an option sealed for permanent submersion to 100 metres for sub-sea use.

Weather used in heavy lifting, mooring anchor placement or sub-sea applications the cabled Load Shackle offers robust construction, advanced electronics, industry leading resolution and accuracy all at a cost-effective, affordable price.

Features & benefits

- Robust constructions
- Compact size and low headroom loss
- High accuracy
- Every unit is proof tested
- Complies with ASME B30.26-2010 Ch 26-6
- Lightweight
- Audible overload alarm
- Unrivalled resolution
- Tare
- Environmentally sealed
- Peak hold
- Advanced options available



Capacity	1te	3.25te	6.5te	12te	25te	55te	85te	120te	200te	300te	400te
Resolution	0.001te	0.005te	0.005te	0.01te	0.02te	0.05te	0.05te	0.1te	0.2te	0.5te	0.5te
Weight	2kg	2.8kg	3.2kg	8kg	18kg	25kg	45kg	85kg	215kg	364kg	520kg
Protection	IP67 std or submersion to 30m as an option										
Safety Factor	300% of rated load										
Operating Temp	-10 - +50c										
Accuracy	±1%										
Dimension A	16.8	26.9	36.6	51.5	73	82.5	105	127	184	213	210
Dimension B	11.2	19.1	25.4	35.1	51	57	70	82.5	121	152	178
Dimension C	36.6	60.5	84	119	178	197	267	330	397	495	572
Dimension D	9.65	16	22.4	31.8	44.5	51	66.5	76	95.5	121	165
Dimension E	26.2	42.9	58	82.5	127	164	184	200	279	330	330
Dimension F	23.1	38.1	53	76	106	122	145	165	267	305	356
Dimension H	63	106	148	210	313	348	453	546	743	895	1022
Dimension L	74.2	103.5	131	175	254	282	356	394	562	664	689
Dimension N	9.65	17.5	24.6	35.1	57	61	79	92	152	172	184
Dimension P	55	89.5	120	165	230	264	344	419	521	618	710

Specifications (mm)